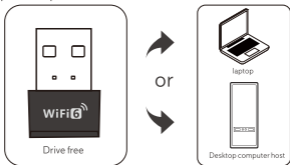


# Quick Installation Guide

1. Plug the drive free network card into the USB port on your computer.

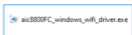


Note: When using the desktop computer, it is recommended to insert the interface behind the computer case, the effect is better! (The USB ports on the front of most desktop computers are underpowered or unavailable)

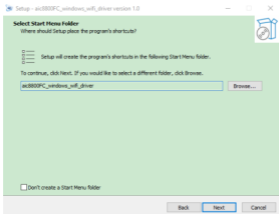
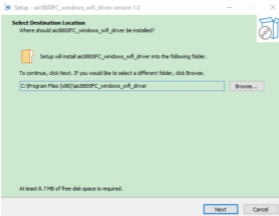
2. Open this U disk



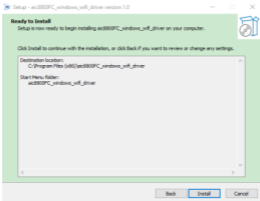
3. Double click to open CD Drive



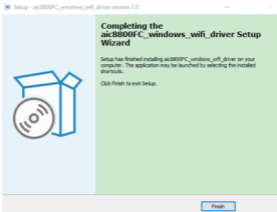
## 4. Click Next



## 5. Click Install

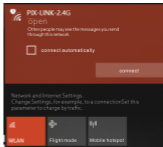


## 6. Click Finish until the automatic installation is complete, and the interface disappears



7. Click the will logo on the right side of the taskbar and select wifi point connect.

This completes the installation of the drive free network card.



Supported by the operating system: Windows XP/Vista/Win7/Win8/Win8.1/Win10 because Microsoft has stopped XP service support, do not recommend using XP system

Note: Since the network card itself does not come with soft AP launch driver, it needs to cooperate with the third-party software Cheetah, 360, wifi sharing Master, etc.